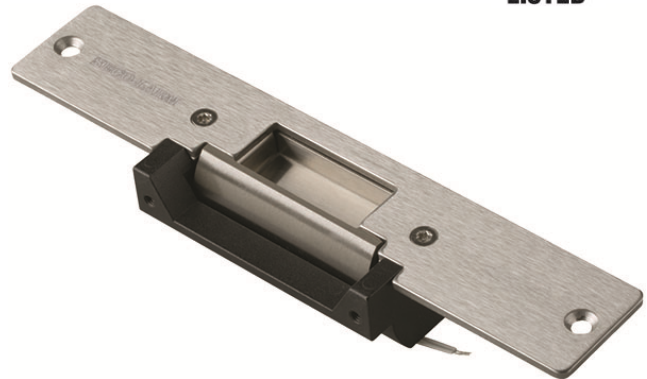


Electric Door Strike

SD-994C24 For wood doors, 24VDC, UL Listed

The SECO-LARM® Electric Door Strike can be used to convert cylindrical lock sets into an electronic access controlled locking system. Combine with an optional SECO-LARM® digital keypad for keyless high security.



Features:

- UL 1034 Listed
- Field-selectable for fail-safe or fail-secure operation
- Can be used with virtually any cylindrical door locking system
- Can use with an optional digital keypad
- Suitable for office-type applications
- Reversible non-handed design fits either right-hand or left-handed doors
- Shallow design for use with most wood doors
- Powered by a solenoid, not a buzzer coil
- Static strength – 1,000-lbs. (454kg)
- Stainless steel keeper for strength and long life
- Non-polarized connection
- Tested to 1 million cycles

1,000-lbs.
Static
Strength

Fail-Safe
Fail-Secure

Trim
Plate
Included

UL
1034



Trimplate (included)

Specifications:

Model	SD-994C24
Operating voltage	24VDC
Current draw	140mA
Static strength	1,000-lbs. (454kg)
Dynamic strength	50ft-lbs. (6.91 m-kgs)
Operating temperature	14°~113° F (-10°~45° C)
Dimensions	7 ¹⁵ / ₁₆ "x1 ⁷ / ₁₆ "x1 ¹ / ₄ " (202x36x32 mm)

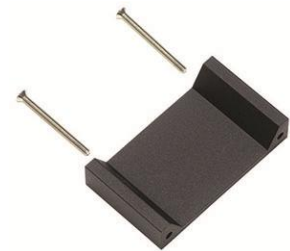
Accessories:

Optional lip-extension brackets available:

SD-995C-LE25
1" Extension



SD-995C-LE50
2" Extension



SECO-LARM® U.S.A., Inc.

16842 Millikan Avenue, Irvine, CA 92606

Phone: (949) 261-2999 | (800) 662-0800 Fax: (949) 261-7326

Website: www.seco-larm.com Email: sales@seco-larm.com



Copyright © 2019 SECO-LARM U.S.A., Inc. All rights reserved.
All trademarks are the property of SECO-LARM U.S.A., Inc. or their respective owners.
The SECO-LARM policy is one of continual development. For that reason, SECO-LARM reserves the right to change prices and specifications without notice. SECO-LARM is not responsible for misprints.
SECO-LARM® ENFORCER® CRIMEBUSTER® CBA® SLI®